

# BUNTING HIKE



## OFF THE BEATEN PATH:

**YES**

## BEST SEASON:

**YEAR ROUND**

## VEHICLE:

**2WD**

## HIKING:

**1.6 MILES TO THE TOP**

## AVERAGE TIME:

**HALF DAY**

## DIFFICULTY:

**HARD AND STEEP**

## ELEVATION:

**5040-5860 FEET**

The Bunting Trail is about 3 miles round trip, not including the extra Spur Trail. Once you near the top of the beautiful Vermilion Cliffs keep an eye out for some petroglyphs! Continue hiking to the top of the mountain. If you are feeling adventurous hike the Spur Trail to the overlook for more scenic views. From this vantage point you can see the first step of the Grand Staircase, Bryce Canyon National Park, and 360 degree views of Kanab and the surrounding area.

Bring the kids for a shorter hike to see the dinosaur tracks that are located up the wash, heading south. Watch for the signs!

## GETTING THERE:

- From Main Street, head south on HWY 89A approximately 1.2 miles.
  - Turn right onto Kanab Creek Drive.
  - Drive 2 miles and at the top of the hill, turn right onto Stanfield Drive.
  - The first parking area on the right is for the Bunting Trail.
  - Head north to the trailhead.
  - In a mile take a short detour to see the dinosaur tracks.
  - Watch for the signs on your left heading up a wash.
  - The signs will lead you to the tracks on a big sandstone boulder.
  - Go back the way you came and start back on the trail to the top.
  - NOTE: If you hike the Spur Trail, please proceed with caution.
- This is a self designated path with no clearly marked trail.

## DISCLAIMER:

"This map and directions are intended for general reference use only. Always check local road and weather conditions. Stay on designated roads. Dirt roads are impassable when wet. Please respect Private Property. Be prepared for a wilderness experience: Always bring extra water, food, sunscreen, and supplies. Cell phone service is non-existent in most areas! Do not remove artifacts or deface the 'rock art'. Leave no trace of your visit so others may enjoy."

Kanab Visitor's Center: 78 S 100 E

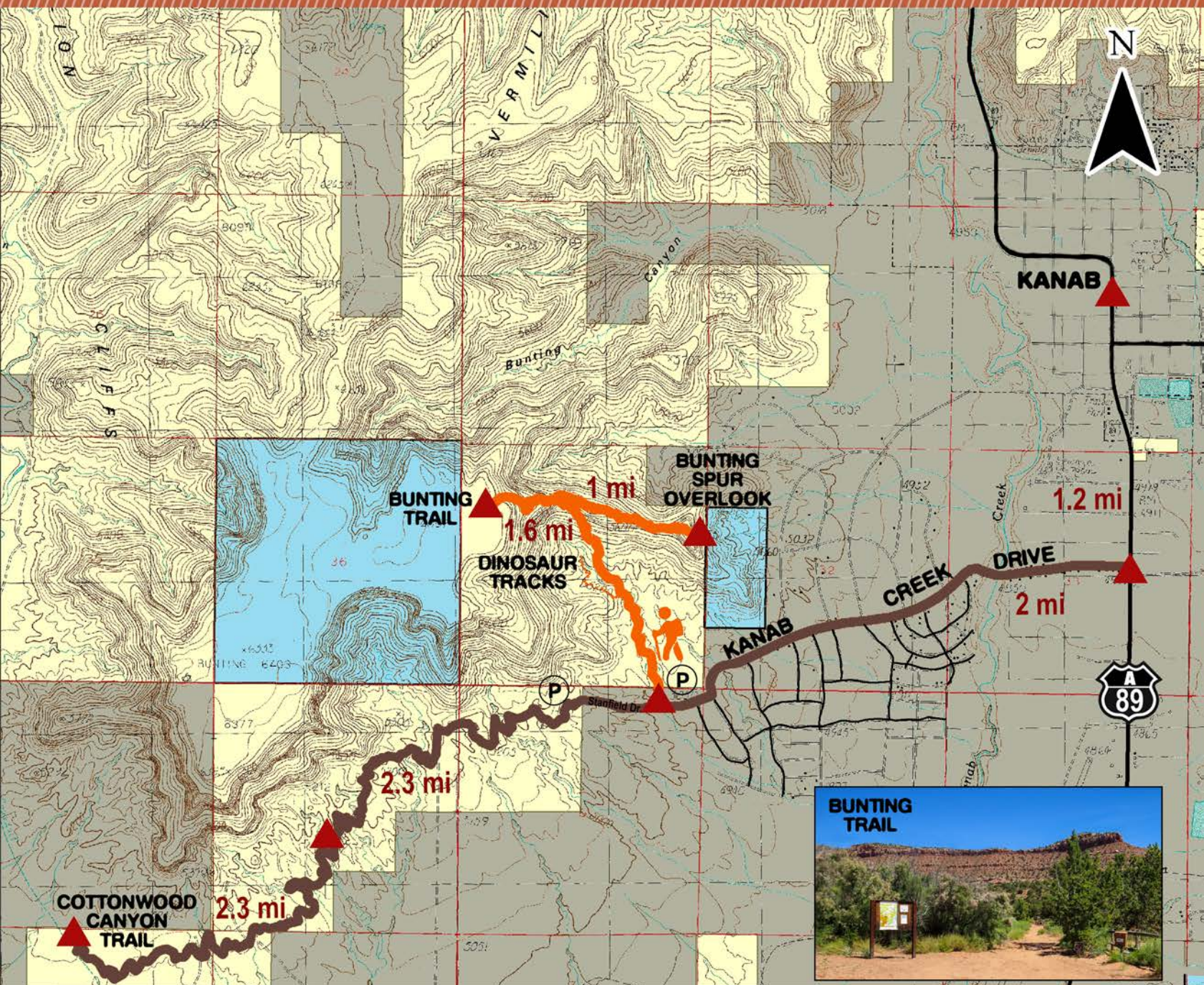
PHONE: 435.644.5033

**KANAB**  
MAGICALLY UNSPOILED





# BUNTING HIKE



ADVENTURE MAP



treadlightly!  
org

LIFE  
**UTAH**  
ELEVATED



**KANAB**  
MAGICALLY UNspoiled