



TO MEXICAN  
HAT (25 MI),  
VALLEY OF  
THE GODS &  
MONUMENT  
VALLEY

SAND ISLAND PETROGLYPH PANEL  
& SAN JUAN RIVER ACCESS

## MAP SYMBOLS

- BLUFF GREAT HOUSE
- CEDAR HALL  
*DesignBuildBLUFF*
- CEMETERY
- CITY PARK
- COMMUNITY CENTER
- LIBRARY
- POST OFFICE

BEARS EARS  
EDUCATION CENTER

BLUFF FORT &  
VISITOR CENTER

COTTONWOOD WASH

# BLUFF UTAH

## BLUFF BUSINESS KEY

### DINING

- 1 CEDAR SHACK  
AT BLUFF DWELLINGS RESORT
- 2 COMB RIDGE EAT AND DRINK
- 3 COTTONWOOD STEAKHOUSE
- 4 DAIRY CAFÉ
- 5 DUKE'S  
AT DESERT ROSE RESORT & CABINS
- 6 K & C TRADING POST
- 7 SAN JUAN RIVER KITCHEN
- 8 TWIN ROCKS CAFÉ

### SHOPPING

- 1 AMIRA'S BOUTIQUE  
AT DESERT ROSE RESORT & CABINS
- 2 BEARS EARS EDUCATION CENTER
- 3 BLUFF ART & CURIOSITY SHOPPE
- 4 BLUFF DWELLINGS RESORT
- 5 CLOUDWATCHER STUDIO  
BY APPOINTMENT ONLY
- 6 CO-OP & VISITOR CENTER  
AT BLUFF FORT
- 7 COMB RIDGE EAT & DRINK
- 8 COW CANYON  
TRADING POST & GALLERY
- 9 DAIRY CAFÉ  
AT COTTONWOOD RV PARK
- 10 K & C TRADING POST
- 11 TWIN ROCKS TRADING POST
- 12 TWIN ROCKS CAFÉ
- 13 WILD EXPEDITIONS
- 14 YANITO BAAHOZHO GALLERY

### LODGING

- 1 ADAMS HOUSE
- 2 BLUFF DWELLINGS RESORT
- 3 BLUFF GARDENS CABINS
- 4 CADILLAC RANCH RV PARK
- 5 CANYON WREN  
BED & BREAKFAST
- 6 CORAL SANDS RV PARK
- 7 COTTONWOOD CABINS
- 8 COTTONWOOD RV PARK
- 9 DESERT ROSE  
RESORT & CABINS
- 10 JENS NIELSEN  
HOUSE & CABINS
- 11 KOKOPELLI INN
- 12 LA POSADA PINTADA
- 13 MOKEE MOTEL
- 14 RECAPTURE LODGE
- 15 WILLOW STREET COTTAGES

### GUIDES

- 1 FAR OUT EXPEDITIONS
- 2 WILD EXPEDITIONS

TO HWY 95  
& BLANDING  
(25.8 MI)

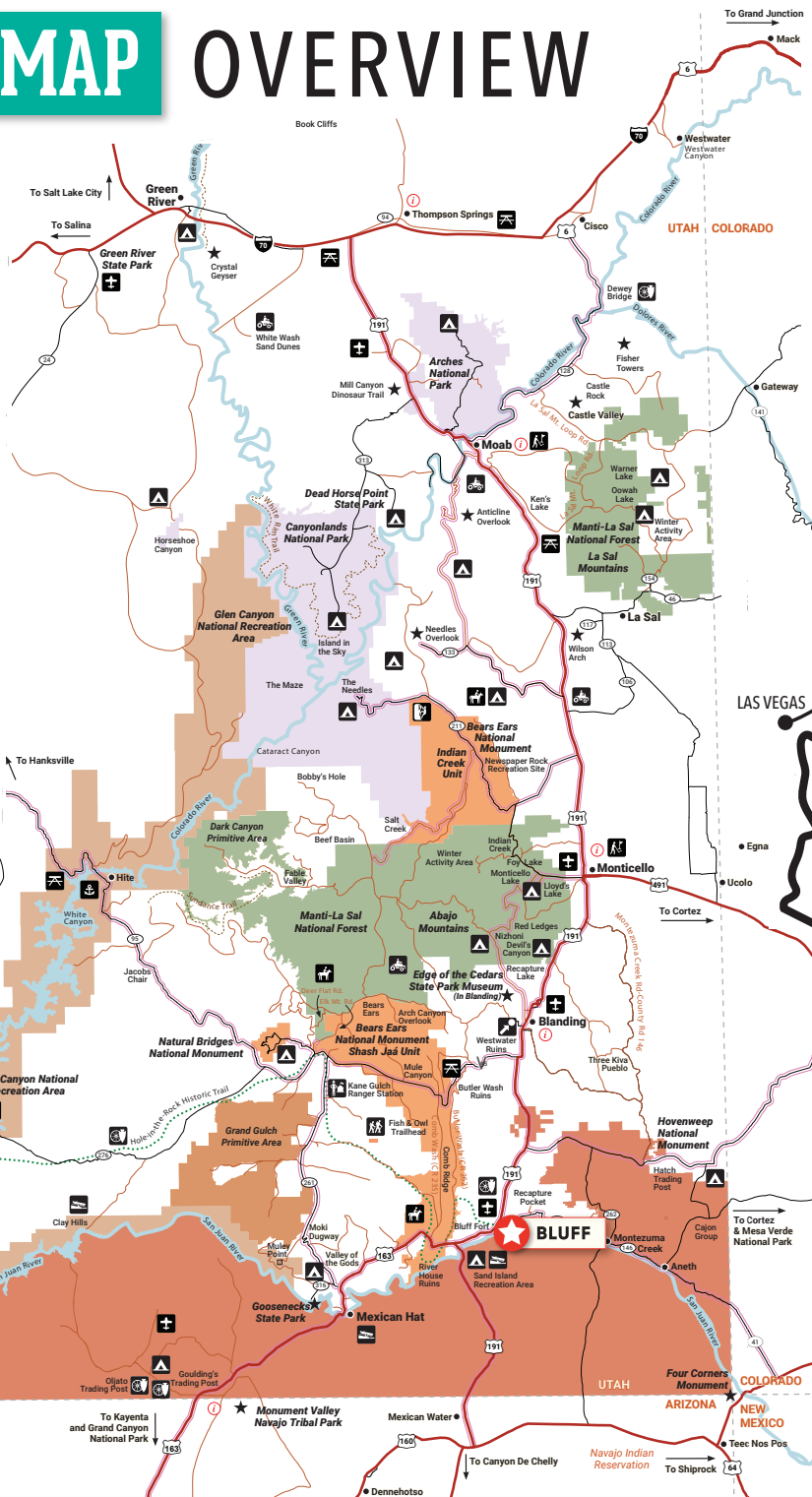
TO HOVENWEEP NTL. MONUMENT,  
FOUR CORNERS MONUMENT, CORTEZ,  
& ST. CHRISTOPHER'S MISSION

MISSION RD

# AREA MAP OVERVIEW

## ICON LEGEND

- Campground
- Airstrip
- Rest Area
- Historical Site
- Golf Course
- ATV Area
- Boat Ramp
- Marina
- Point of Interest
- Horseback Riding
- Rock Climbing
- Ranger Station
- Scenic Attraction
- Visitor's Center



## MAP LEGEND

### ROADS

- Scenic Byway or Backway
- Primitive Roads  
*High Clearance Recommended*
- Passenger Vehicle
- Highway
- Hole-in-the-Rock Historic Trail
- Hiking / Biking Trail

### LAND DESIGNATION

- National Park
- National Monument
- National Forest
- National Recreation Area
- Navajo Reservation
- Primitive/Wilderness Area

## REGIONAL MAP



## GETTING AROUND IN CANYON COUNTRY

Most areas and sites are on paved roads, some accessed via graded gravel, and a few require 4-wheel drive. Most are within a short drive from our communities.

Those areas accessed by 4-wheel drive may require long days or overnight stays. Prepare for a wilderness experience. It is not recommended that you travel to remote sites alone or with only one vehicle. When wet, some roads are impassable even for a 4-wheel vehicle. Check weather and road conditions prior to a trip into the backcountry.

## HOURS FROM:

### FROM THE NORTH & EAST

FROM	TO	TIME (HR/MIN)
Salt Lake City, UT	Monticello, UT	5H
Denver, CO	Monticello, UT	6H
Grand Junction, CO	Monticello, UT	2H 30M
Moab, UT	Monticello, UT	1H
Durango, CO	Monticello, UT	2H
Monticello, UT	Blanding, UT	20M
Blanding, UT	Bluff, UT	30M
Bluff, UT	Mexican Hat, UT	30M
Mexican Hat, UT	Monument Valley	20M

### FROM THE SOUTH

FROM	TO	TIME (HR/MIN)
Page, AZ	Monument Valley	2H
Phoenix, AZ	Monument Valley	4H 47M
Las Vegas, NV	Monument Valley	6H
Los Angeles, CA	Monument Valley	9H 24M

### WITHIN UTAH'S CANYON COUNTRY

FROM	TO	TIME (HR/MIN)
Monticello	Canyonland Ntl. Park & Needles	1H
Monticello	Bears Ears Ntl. Monument & Indian Creek Unit	30M
Blanding	Lake Powell (Halls Crossing)	1H 30M
Blanding	Natural Bridges Ntl. Monument	50M
Blanding	Bears Ears Ntl. Monument Shash Jaa Unit	30M
Bluff	Hovenweep Ntl. Monument	1H
Bluff	Gooseheads State Park	30M
Bluff	Valley of the Gods	20M
Bluff	San Juan River (Sand Island)	5M
Bluff	Four Corners Monument	1H

## THE NUMBERS...

- 4

**4**  
National Monuments
- 2

**2**  
National Parks & Recreation Areas
- 1

**1**  
National Forest
- 2

**2**  
State Parks
- 2

**2**  
Navajo Tribal Parks & Monuments
- 2

**2**  
Rivers