

# Resilient Aransas





# Speaking Points

1. Case Study – IKEA and Fairway  
– The Resilience Dividend
2. Disaster Risk in Rockport-Fulton
3. Business Continuity Planning

**Our Disaster Recovery Plan  
Goes Something Like This...**







Investing in  
Disaster Resilience



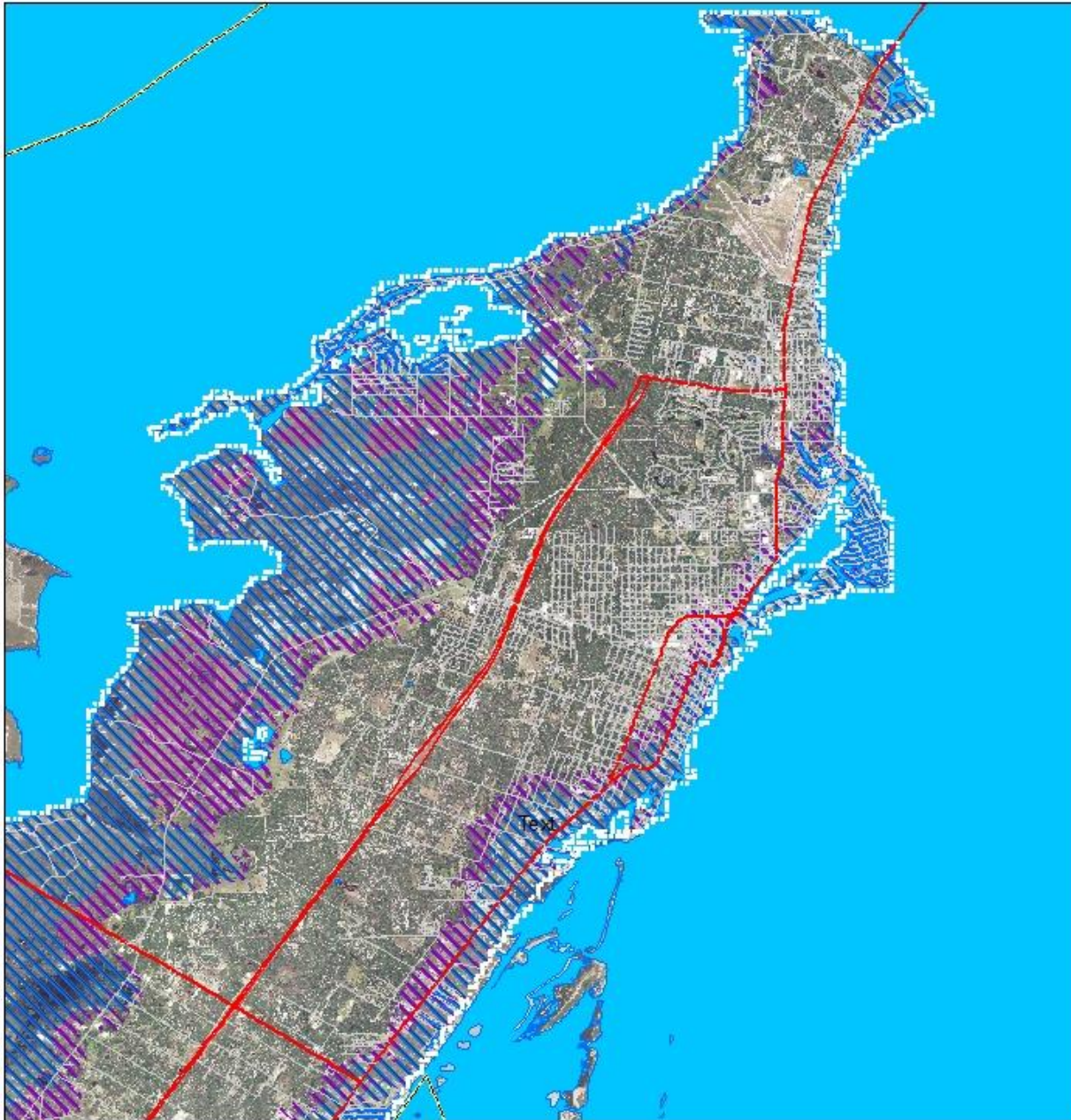
Investing in  
Disaster Resilience

# Speaking Points

- ~~1. Case Study – IKEA and Fairway~~  
~~– The Resilience Dividend~~
2. Disaster Risk in Rockport-Fulton
3. Business Continuity Planning

**Our Disaster Recovery Plan  
Goes Something Like This...**



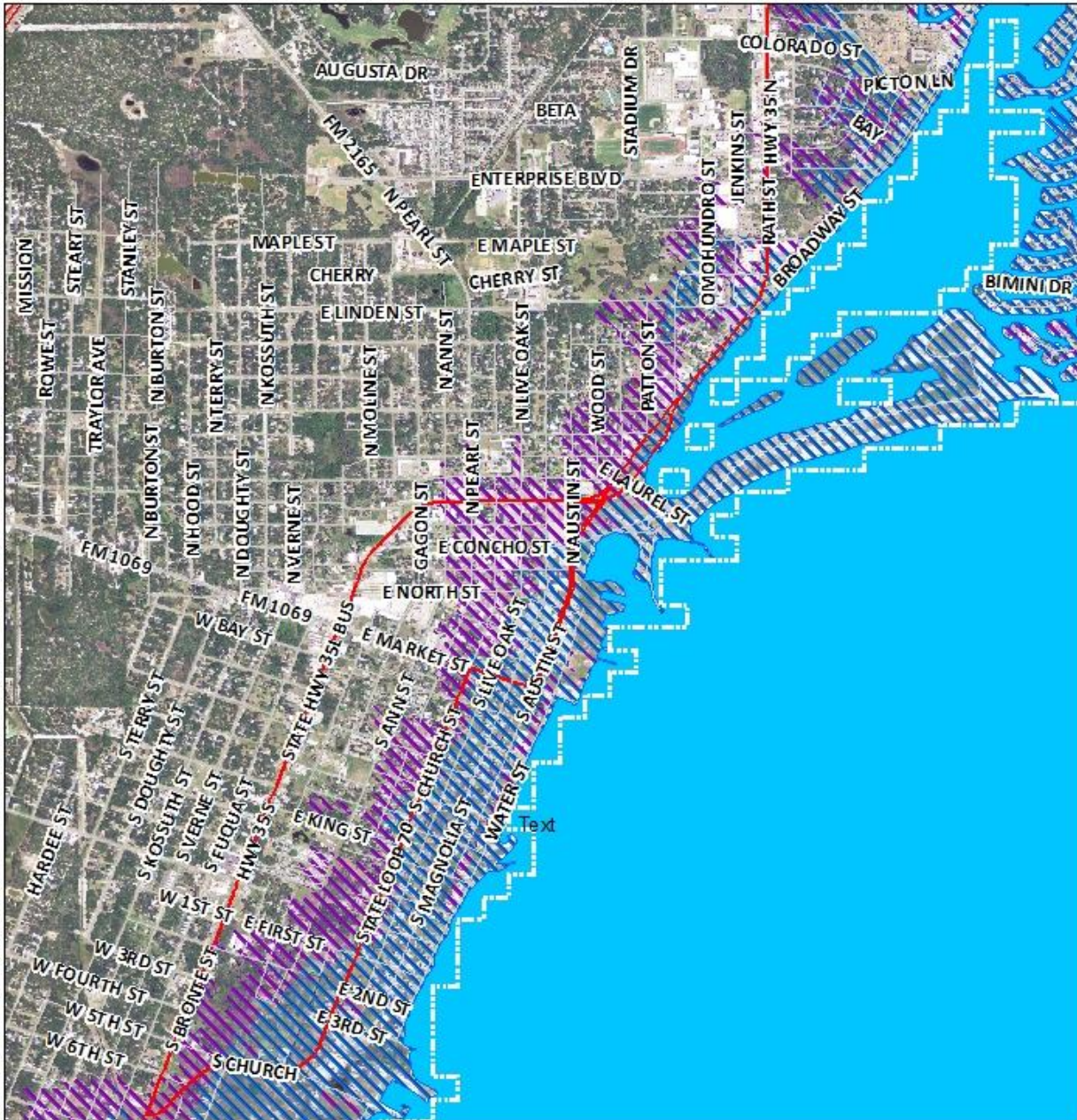


## Live Oak Peninsula Flood Zone Map

### Legend

-  100 Year
-  500 Year

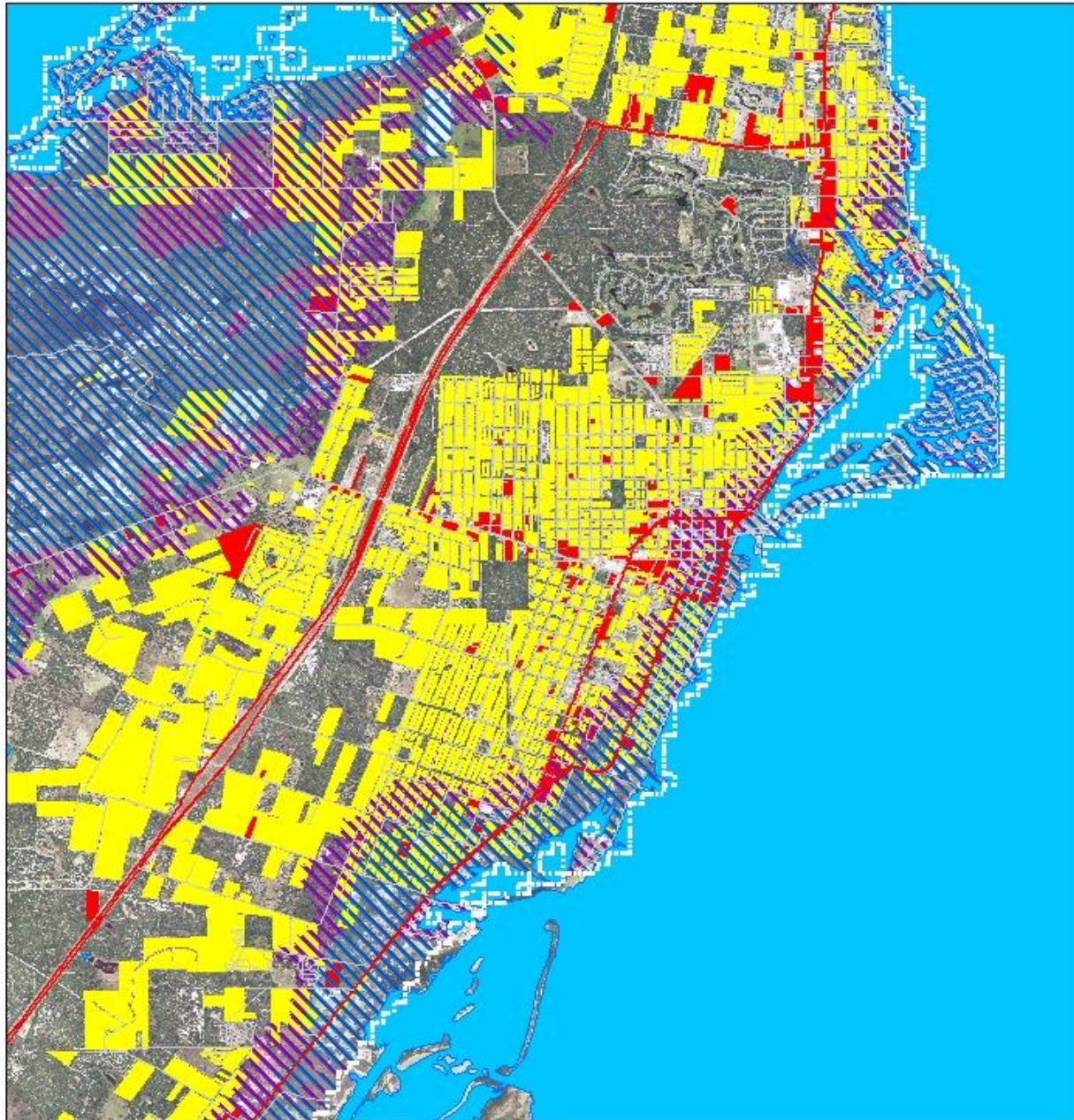




Live Oak Peninsula  
Flood Zone Map  
v.2

**Legend**

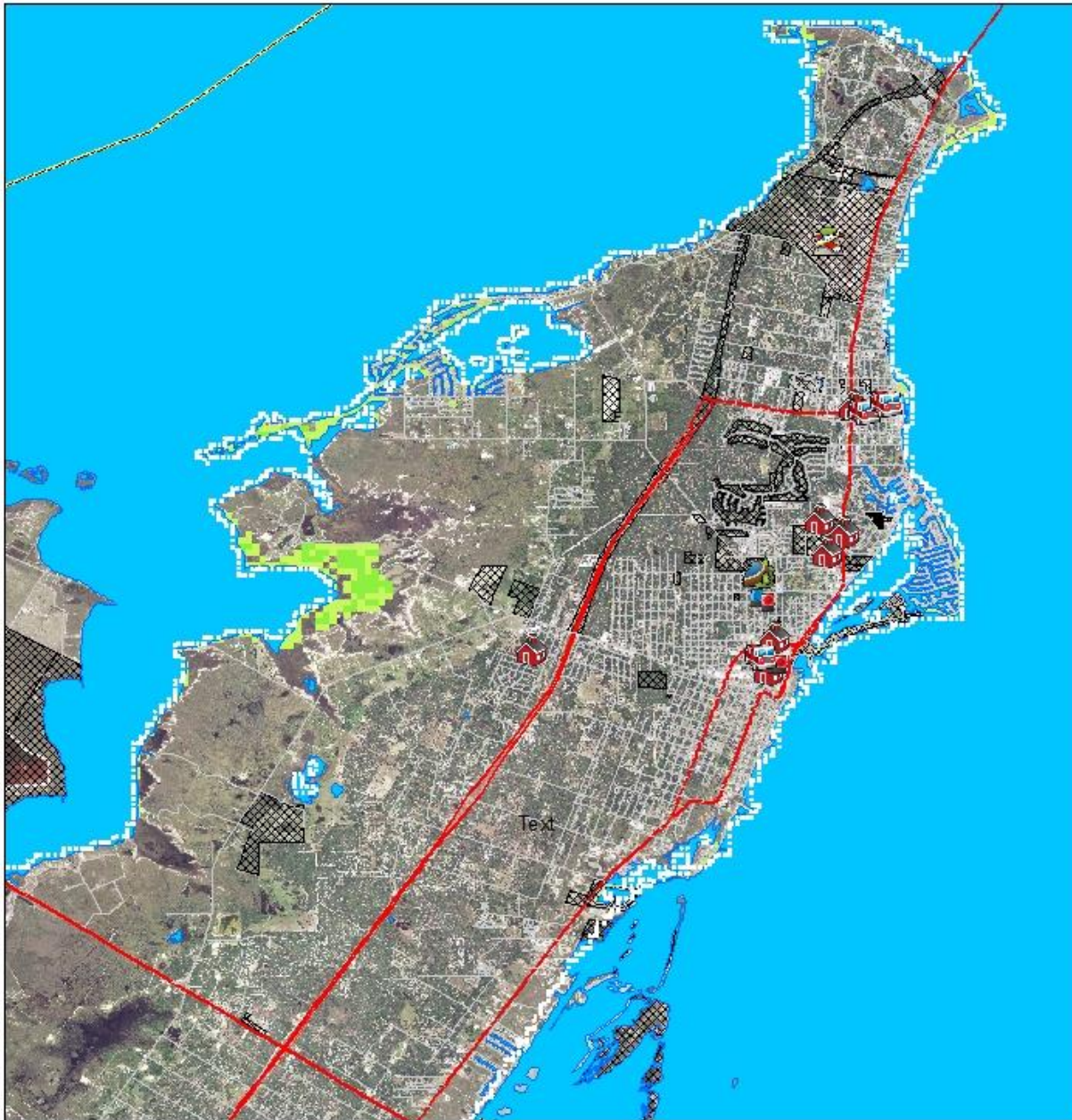
-  100 Year
-  500 Year



## Live Oak Peninsula Parcel Layer Floodplain Layer

### Legend

- Commercial
- Residential
- Utility
- Industrial
- 100 Year
- 500 Year



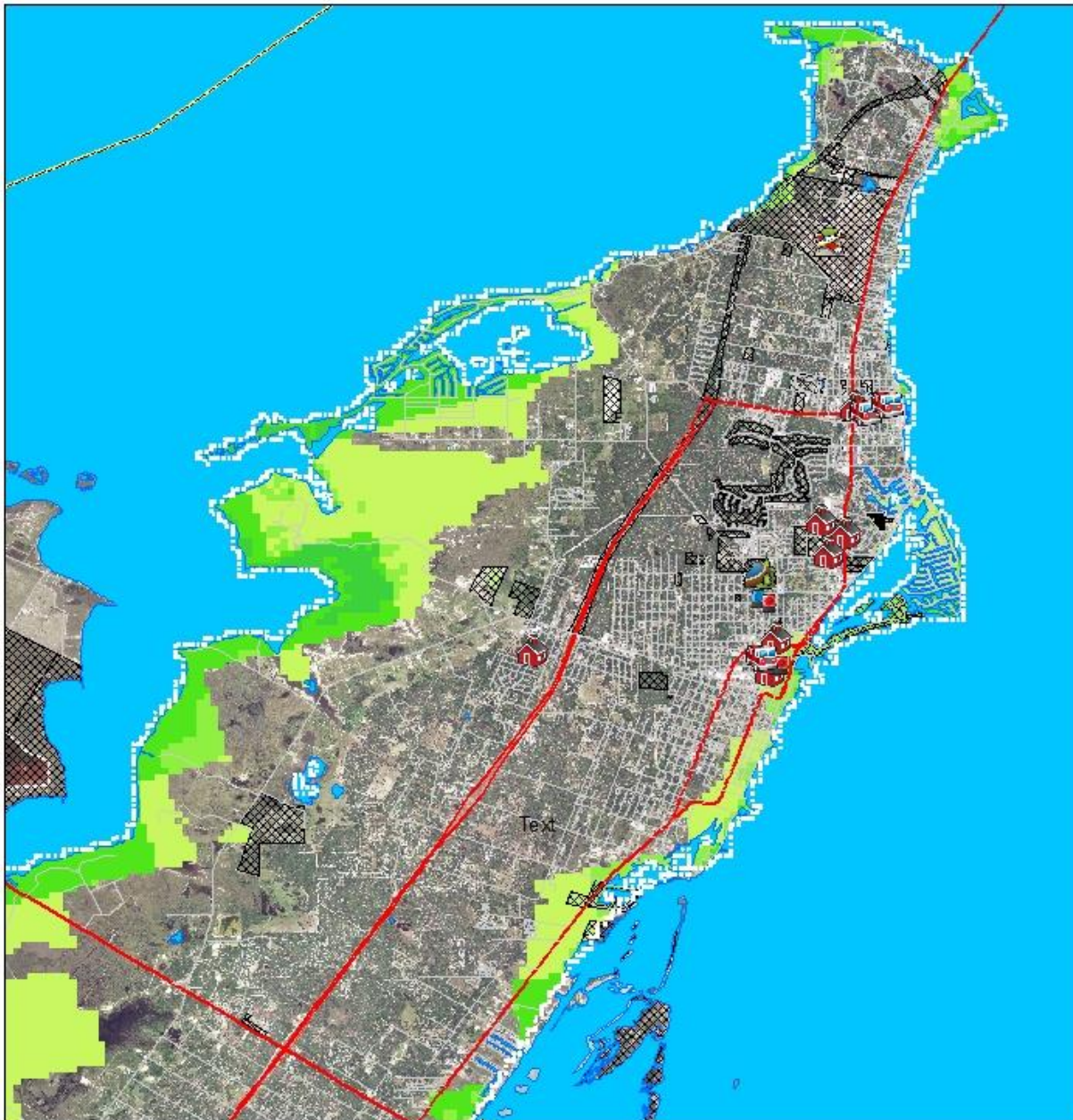
# Live Oak Peninsula Storm Surge Depth Hurricane Category 1 (74-95 mph)

## Legend

### Surge and SLR

### Surge Depth plus SLR



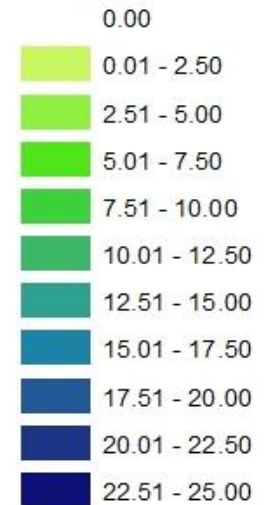


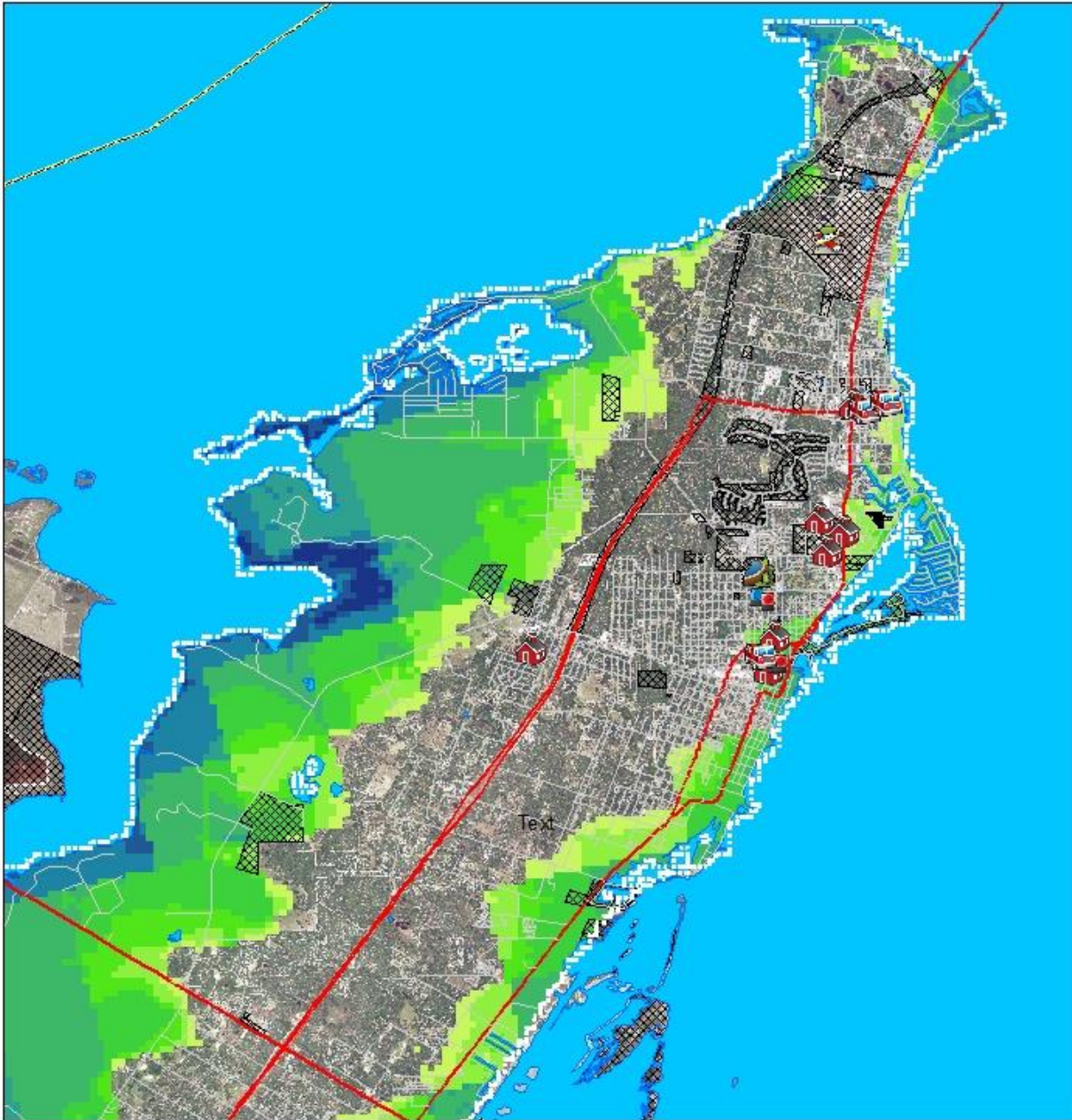
## Live Oak Peninsula Storm Surge Depth Hurricane Category 3 (111-129 mph)

### Legend

#### Surge and SLR

#### Surge Depth plus SLR





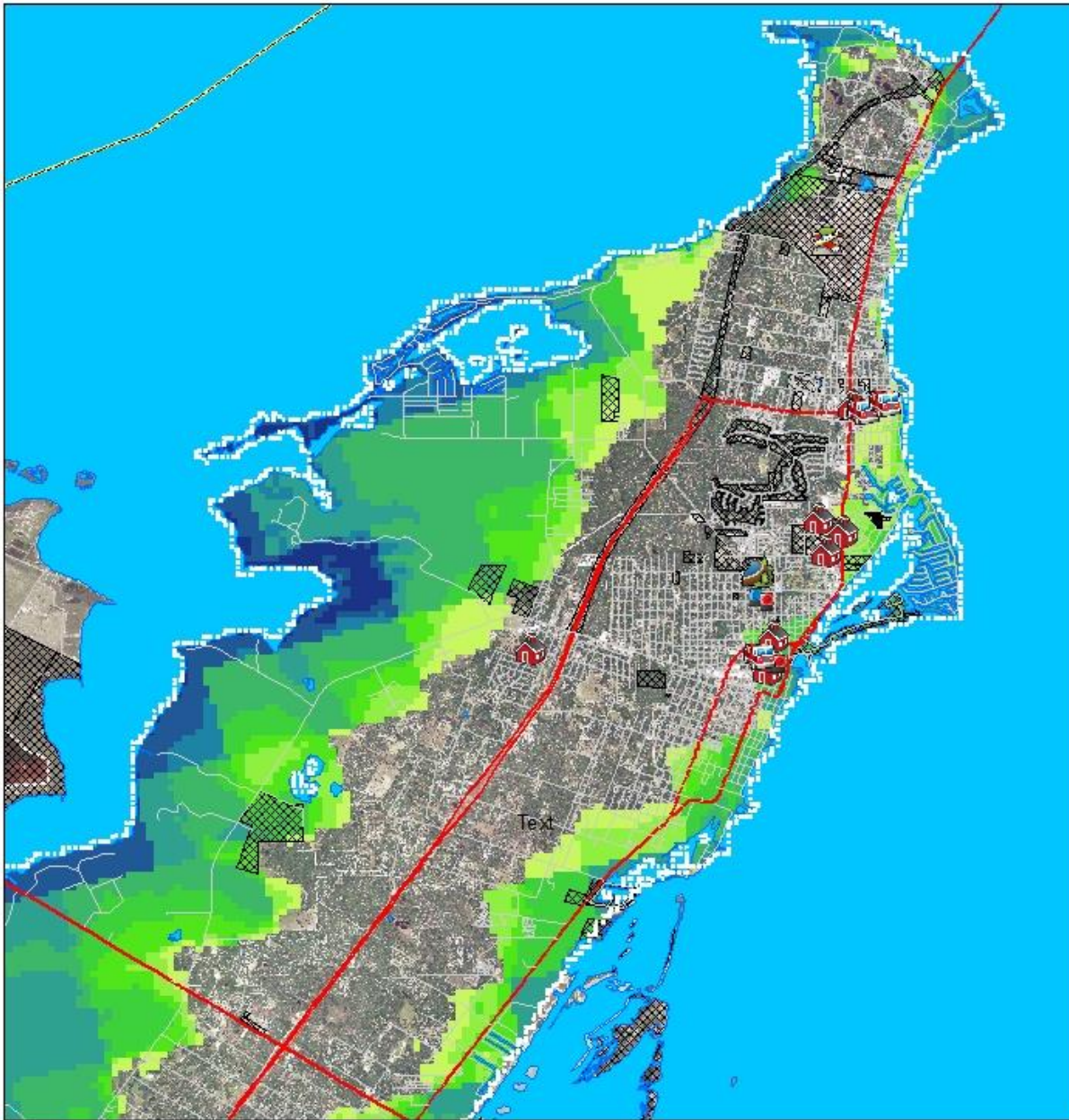
## Live Oak Peninsula Storm Surge Depth Hurricane Category 5 (157+ mph)

### Legend

#### Surge and SLR

#### Surge Depth plus SLR





Live Oak Peninsula  
Storm Surge Depth  
Hurricane Category 5  
Sea Level Rise 1 ft  
(157+ mph)

**Legend**

**Surge and SLR**

**Surge Depth plus SLR**

0.00

0.01 - 2.50

2.51 - 5.00

5.01 - 7.50

7.51 - 10.00

10.01 - 12.50

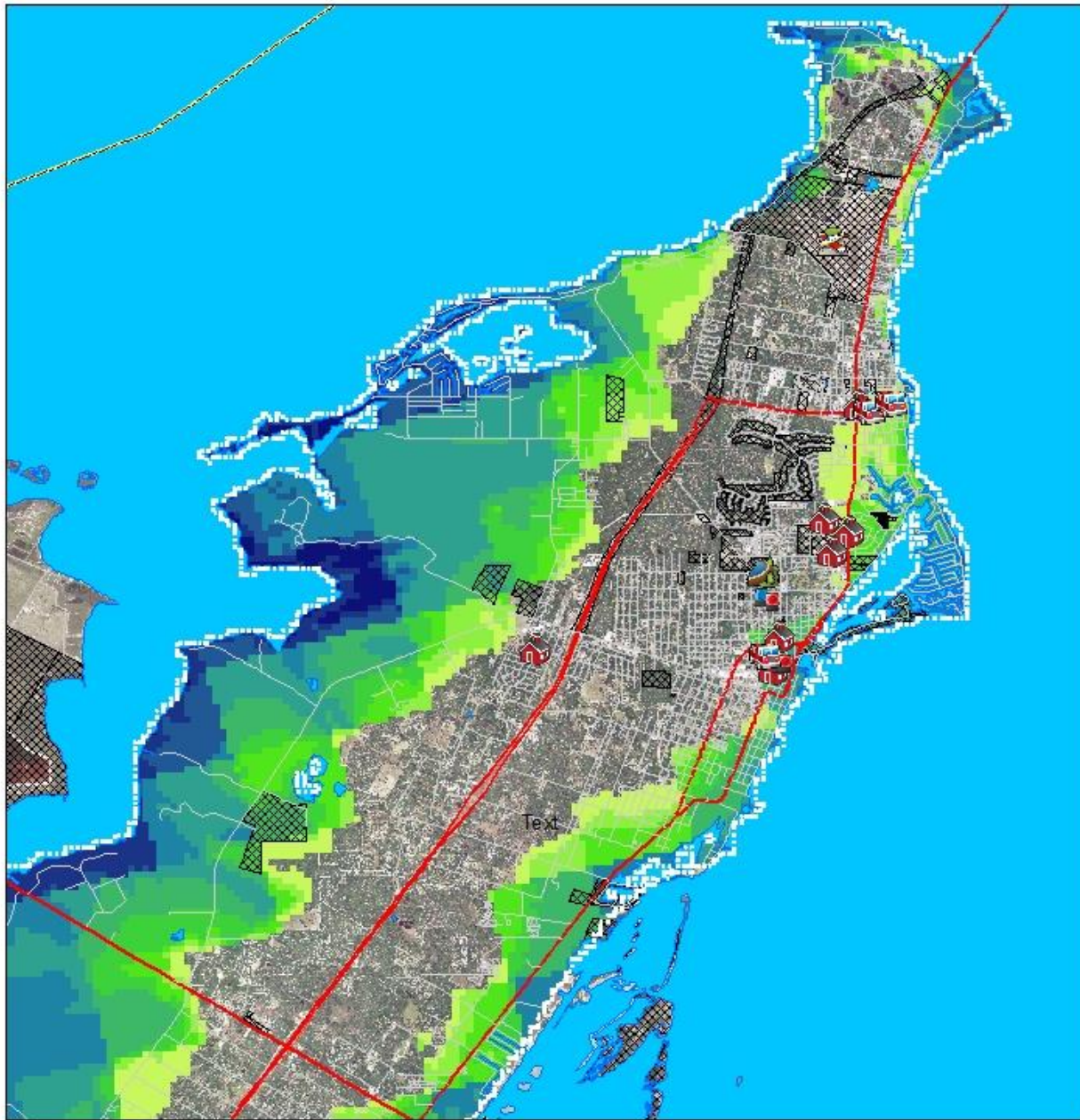
12.51 - 15.00

15.01 - 17.50

17.51 - 20.00

20.01 - 22.50

22.51 - 25.00



Live Oak Peninsula  
Storm Surge Depth  
Hurricane Category 5  
Sea Level Rise 3 ft  
(157+ mph)

**Legend**

**Surge and SLR**

**Surge Depth plus SLR**

0.00

0.01 - 2.50

2.51 - 5.00

5.01 - 7.50

7.51 - 10.00

10.01 - 12.50

12.51 - 15.00

15.01 - 17.50

17.51 - 20.00

20.01 - 22.50

22.51 - 25.00

# Speaking Points

- ~~1. Case Study – IKEA and Fairway~~  
~~– The Resilience Dividend~~
- ~~2. Disaster Risk in Rockport-Fulton~~
3. Business Continuity Planning

**Our Disaster Recovery Plan  
Goes Something Like This...**






# Business Continuity Planning

**Business Continuity Planning** is a **management** process that identifies risk, threats and vulnerabilities that could impact an entity's continued operations and provides a framework for building organizational resilience and the capability for an effective response.

# Business Continuity Planning


## Texas Sea Grant at Texas A&M University

TOURISM RESILIENCE INDEX



### A Business Self-Assessment


Understanding How Prepared  
Your Business is for a Disaster



"On the road to tourism resilience"




FISHERIES RESILIENCE INDEX



### A Business Self-Assessment

Understanding How Prepared  
Your Business is for a Disaster



"On the road to fisheries resilience"

# Speaking Points

- ~~1. Case Study – IKEA and Fairway  
– The Resilience Dividend~~
- ~~2. Disaster Risk in Rockport-Fulton~~
- ~~3. Business Continuity Planning~~

Race Hodges  
[Race.hodges@tamu.edu](mailto:Race.hodges@tamu.edu)  
281-210-6067